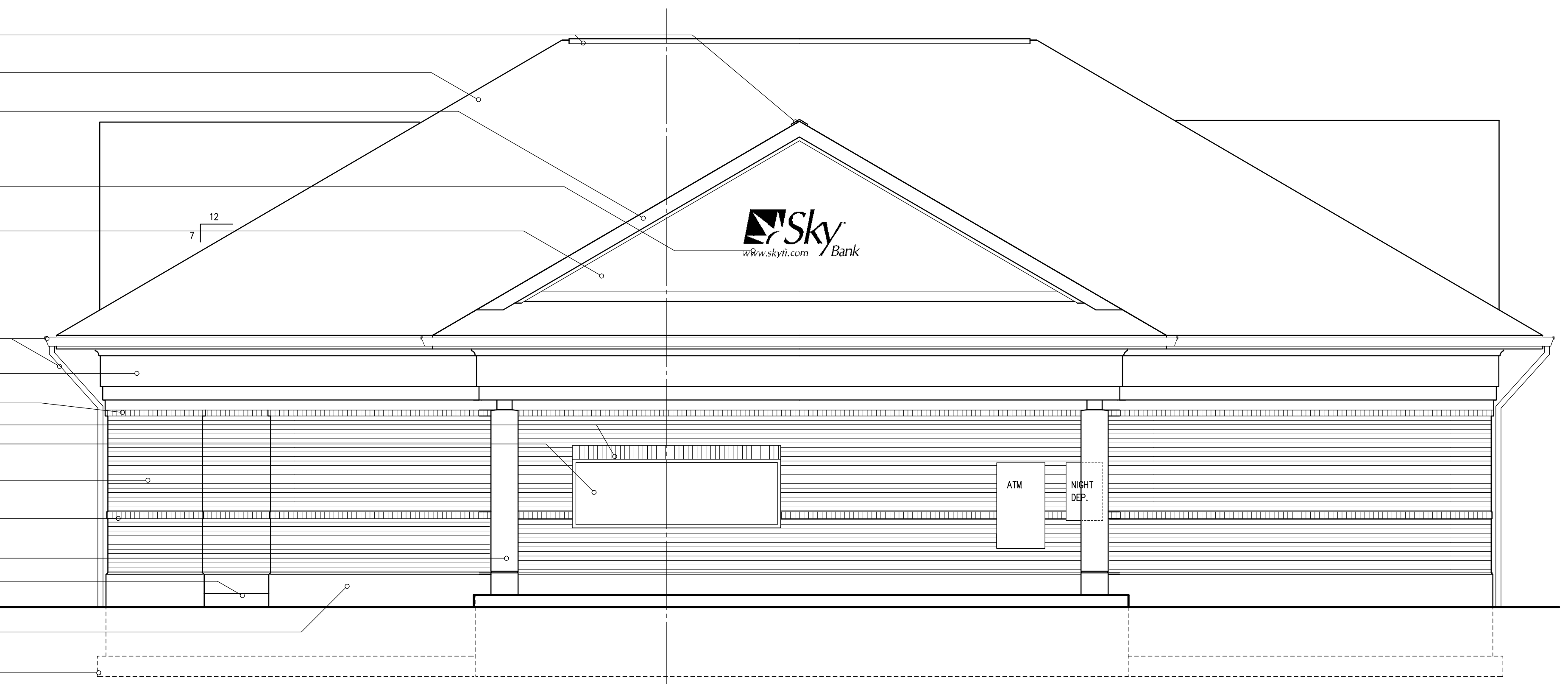
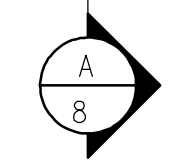


- CONTINUOUS RIDGE VENT
- ASPHALT SHINGLES
- LAYERED 2x8 ALUMINUM CLAD RAKE BOARD
- SIGN BY OTHERS
- (EFIS) EXTERIOR INSULATION FINISH SYSTEM
- PREFINISHED ALUM. GUTTER & DOWNSPOUT
- (EFIS) EXTERIOR INSULATION FINISH SYSTEM
- CONTINUOUS BRICK ROWLOCK
- BRICK SOLDIER COURSE
- BR GLASS - DRIVE-UP WINDOW
- FACE BRICK VENEER
- CONTINUOUS BRICK ROWLOCK
- CONCRETE COLUMN - PAINTED w/ 1" REVEAL
- CONCRETE STOOP
- GRADE
- CONCRETE WATER TABLE w/ SACK RUBBED FINISH (TYP)
- FOUNDATION PROFILE

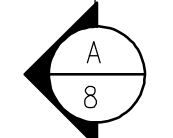
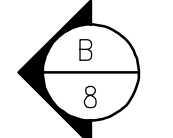
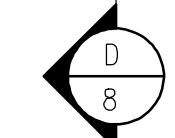
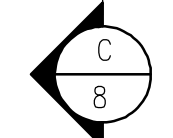



SOUTH ELEVATION
SCALE - 1/4" = 1'-0"



- CONTINUOUS RIDGE VENT
- ASPHALT SHINGLES
- LAYERED 2x8 ALUMINUM CLAD RAKE BOARD
- SIGN BY OTHERS
- (EFIS) EXTERIOR INSULATION FINISH SYSTEM
- PREFINISHED ALUM. GUTTER & DOWNSPOUT
- (EFIS) EXTERIOR INSULATION FINISH SYSTEM
- CONTINUOUS BRICK ROWLOCK
- 1" INSULATED REFLECTIVE GLASS IN ALUM. FRAME
- FACE BRICK VENEER
- CONTINUOUS BRICK ROWLOCK
- CONCRETE COLUMN - PAINTED w/ 1" REVEAL
- CONCRETE STOOP
- CONCRETE WATER TABLE w/ SACK RUBBED FINISH (TYP)
- FOUNDATION PROFILE

NORTH - TUSCARAWAS STREET ELEVATION
SCALE - 1/4" = 1'-0"




 www.skyfi.com Bank
 3504 Tuscarawas Street West
 Canton, Ohio 44708
 JOB # M06060 SEPTEMBER 15, 2006
 REV. 11/20/06

