

EXISTING
SANITARY MANHOLE
T.C. = 1109.79'
F.L. = 1099.09

ZONING

C-4 GENERAL BUSINESS DISTRICT
SETBACKS:

FRONT - 80'
SIDE - 20'
REAR - 20'

PARKING SPACES

1 SPACE FOR EVERY 250 SQUARE FEET
OF FLOOR AREA REQUIRED..... 35 SPACES REQUIRED

HANDICAPPED PARKING SPACES 2
REGULAR PARKING SPACES (10' x 20') 34

TOTAL SPACES 36

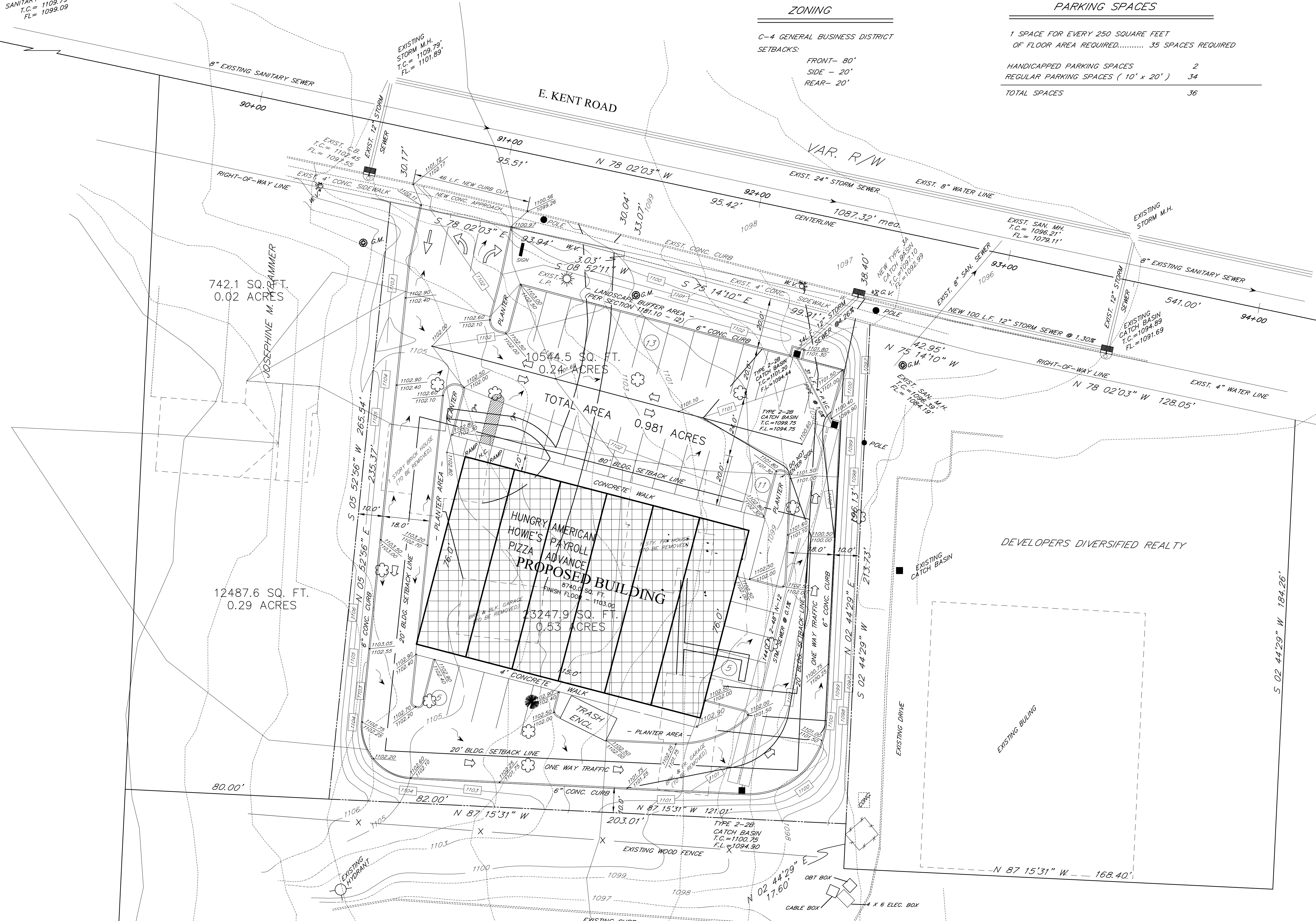
742.1 SQ. FT.
0.02 ACRES

12487.6 SQ. FT.
0.29 ACRES

10544.5 SQ. FT.
0.24 ACRES

TOTAL AREA
0.981 ACRES

HUNGRY AMERICAN
HOWIE'S PAYROLL
PIZZA ADVANCE
PROPOSED BUILDING
8740.0 SQ. FT.
FINISH FLOOR
23247.9 SQ. FT.
0.53 ACRES



DEVELOPERS DIVERSIFIED REALTY

S 02 44'29" W 184.26'

EXISTING DRIVE

EXISTING BUILDING

CABLE BOX
4 X 6 ELEC. BOX